

## TWINLIFT 3.2

MADE IN ITALY



|                      |             |
|----------------------|-------------|
| CAPACITY:            | 3200 kg     |
| POWER SUPPLY:        | 400V/50Hz   |
| MOTOR POWER:         | 2,2 kW      |
| LIFTING HEIGHT:      | 2010 mm     |
| LOWEST HEIGHT :      | 95 mm       |
| CLEARANCE:           | 2650 mm     |
| 3-STAGE SHORT ARMS : | 500-900 mm  |
| 2-STAGE LONG ARMS    | 810-1200 mm |
| NOISE LEVEL:         | <70 dB (A)  |
| WEIGHT:              | 535 kg      |

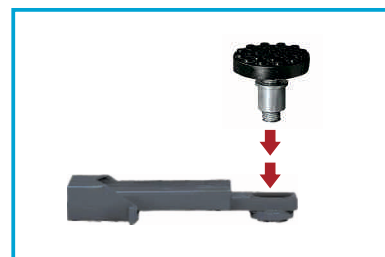
Electromechanical lift with extended arms ♦ Raised motor Thermally protected performance ♦ Telescopic support arms with optimal fulcrum ♦ Support and lock nuts made of bronze ♦ Automatic locking of the arms during lifting ♦ Automatic lubrication system for support nuts ♦ Automatic locking of the arms during lifting ♦ Quick attachment system for adapters auxiliary ♦ Electromechanical synchronization with an accuracy of 20 mm ♦ Devices safety in accordance with the EN1493: 210 standard



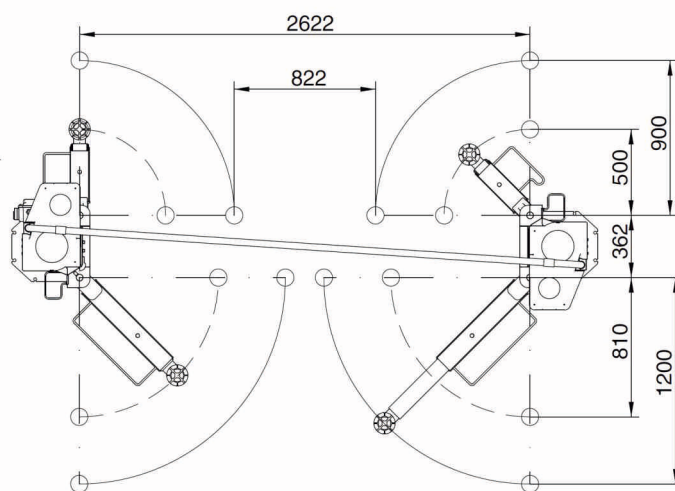
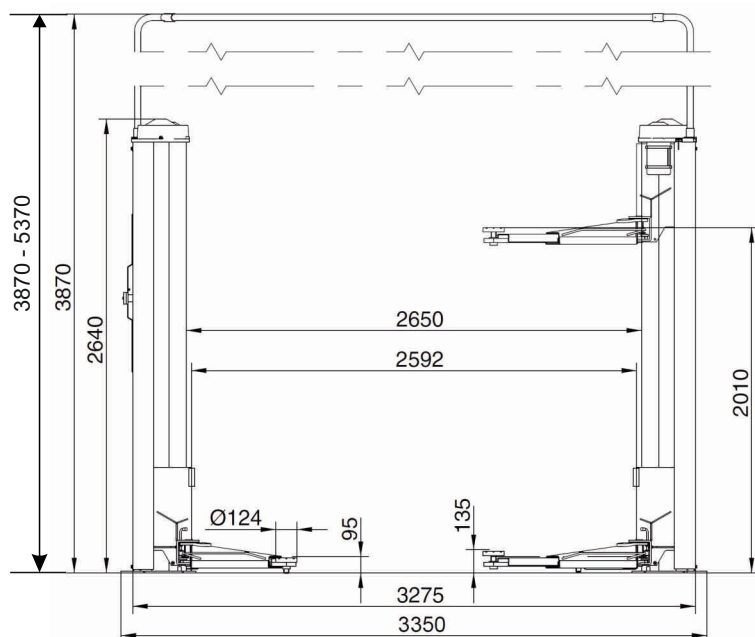
ONE-SWITCH CONTROL



2 AND 3-STAGE ARMS



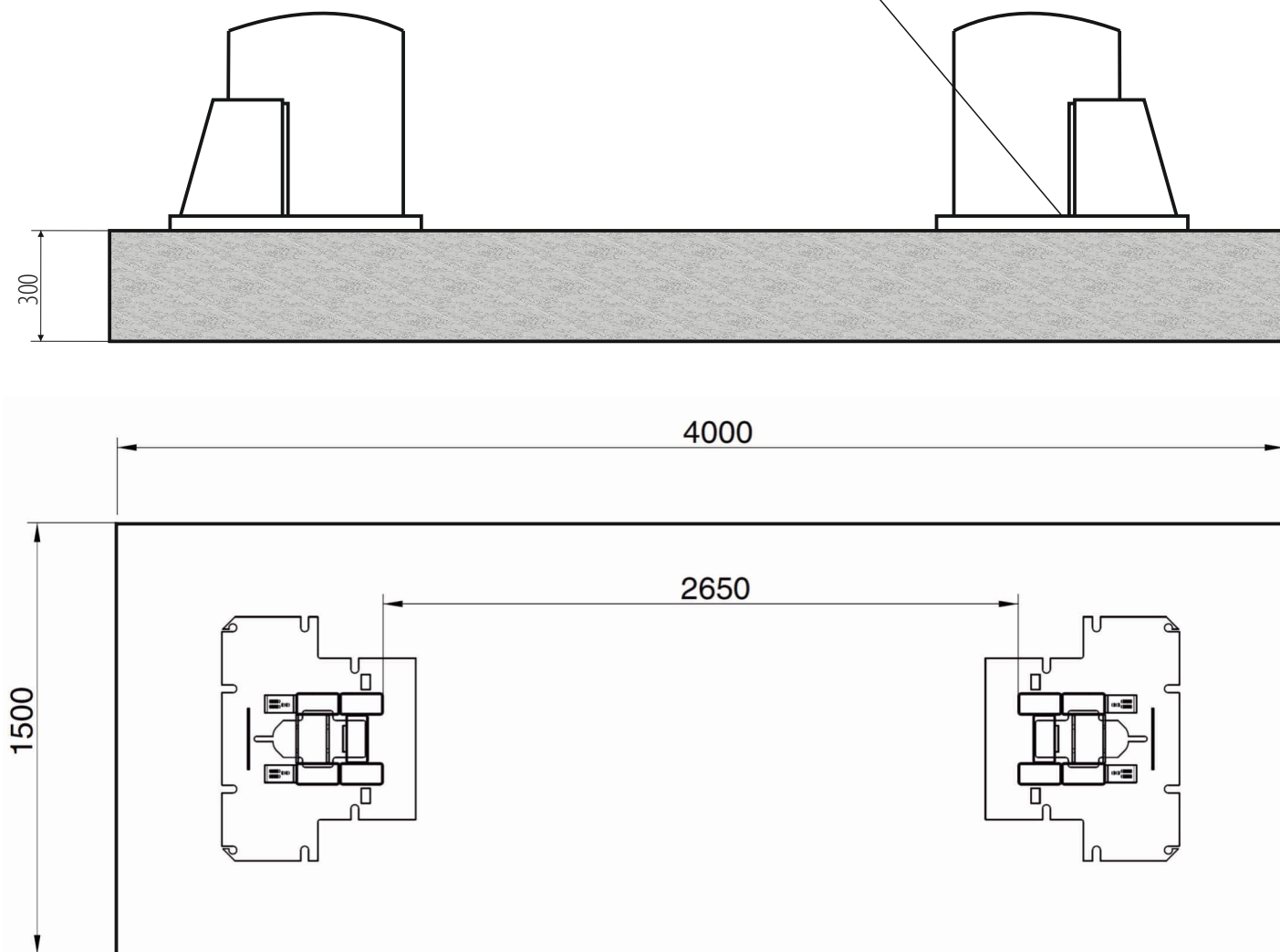
QUICK CHANGE OF ADAPTERS



## TWINLIFT 3.2

MADE IN ITALY

Mechanical anchor M10/110 mm



FLOOR DIMENSIONS: 4000x1500mm

### INSTALLATION REQUIREMENTS:



Concrete class: B25 or C20 / 25 with a minimum mounting area: 4000x1500x300mm ♦ Acceptable floor imbalance: +/- 5mm, floor execution: 3 weeks before assembly ♦ Mounting anchors: mechanical M10 / 110 mm 16 pieces or chemical M10 / 110mm ♦ Power supply: 5x2.5mm cable to the place of assembly ♦ Current protection: min. 32A with 3-phase 400V / 50Hz power supply.

Installation allowed only in closed areas ♦ prohibition of using reinforcement 20 cm from the top thicker than 4mm<sup>2</sup> ♦ assembly for chemical anchors for an additional fee (submit in advance, preferably when setting the date of assembly) ♦ All connections, with particular reference to electrical connections, they must be made by authorized persons ♦ The installation must remain carried out by qualified personnel according to the rules attached in this building plan ♦ In the case of assembly by Nortec or its authorized service center, the lift must be on solid ground.