

PN500N



CAPACITY:	5000 kg
POWER SUPPLY:	400V/50Hz
PNEUMATIC SUPPLY:	8 bar max.
MOTOR POWER:	3,5kW
LIFTING HEIGHT:	290-2160 mm
PLATFORMS:	608 x 5607 mm
POZIOM HAŁASU:	<70 dB (A)
WEIGHT:	2570 kg

Scissor lift for geometries with play detector ♦ hydraulic axle lift pneumatically powered, pneumatically released height lock ♦ installation in a moat or on a floor (optional) mechanical, pneumatically released height lock, photocell synchronization control ♦ control of the elevator with 24V safe voltage from the level of an external control box ♦ hydraulic safety devices in the event of sudden oil or overload ♦ sensor of extreme and safe position of platforms ♦ acoustic signal of the final descent phase.



UNION ASSISTANCE



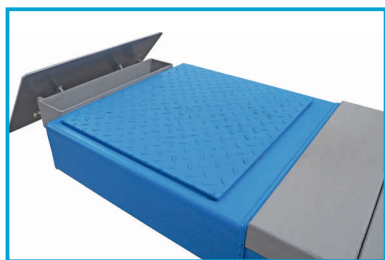
PNEUMATIC LOCKS



SELECTIONS FOR TURNTABLES



SLIP PLATES



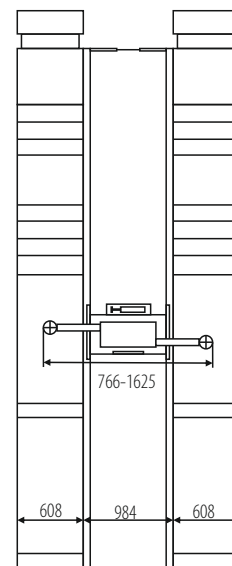
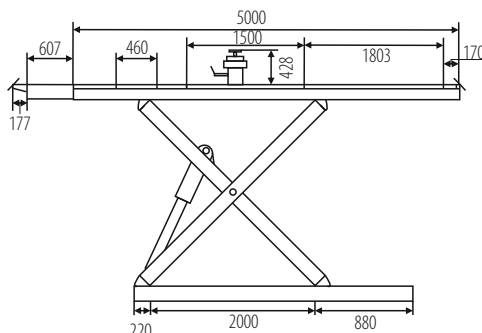
PLAY DETECTOR



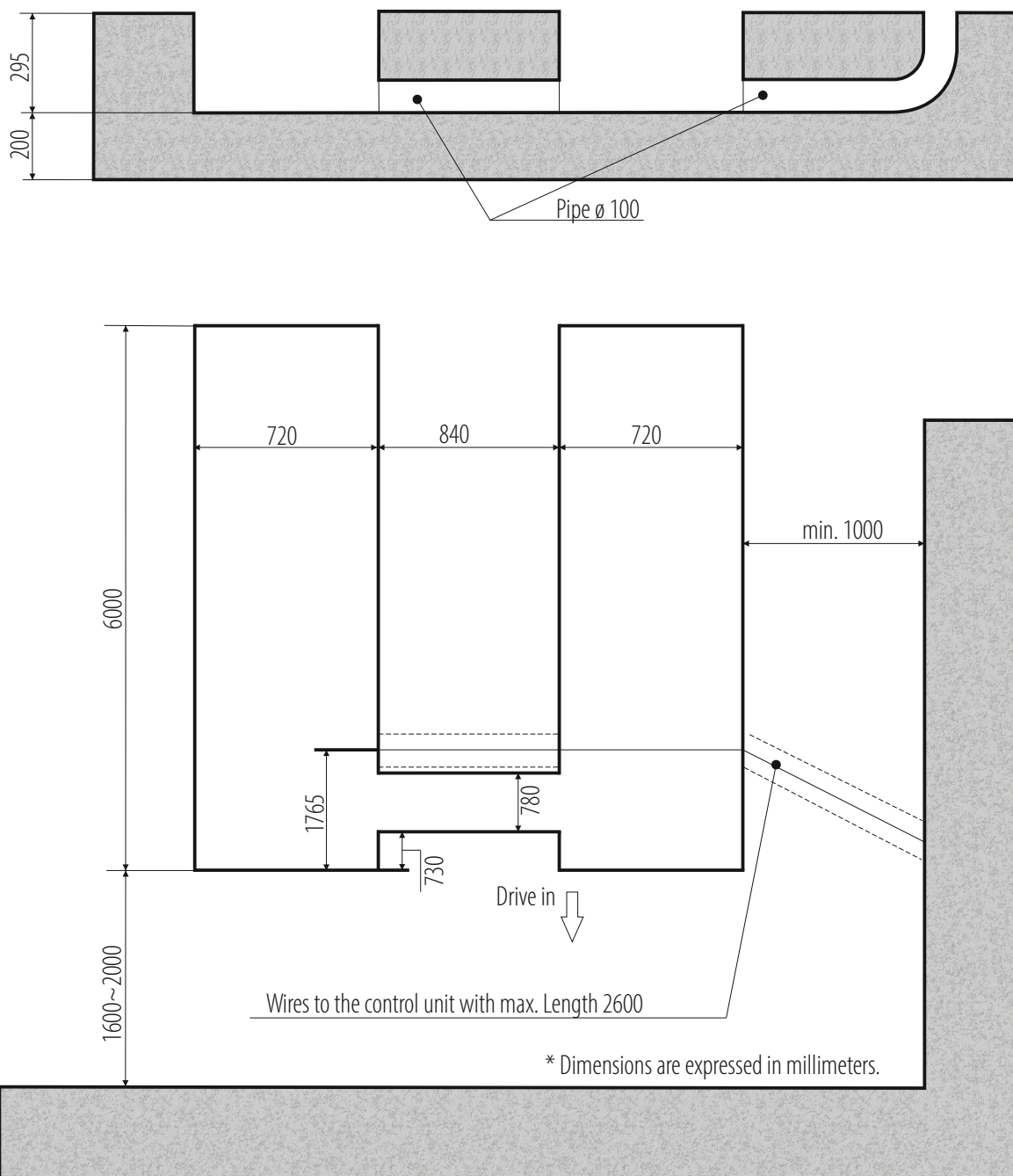
PROTECTION AGAINST ROLLING



AXLE JACK WITH 2.5T CAPACITY



PN500N



INSTALLATION REQUIREMENTS:



Concrete class: B25 or C20 / 25 with a minimum mounting area: 6220x2480x200mm ♦ Acceptable floor imbalance: +/- 5mm, floor execution: 3 weeks before assembly ♦ Mounting anchors: mechanical M12 / 150 mm 16 pieces or chemical M16 / 250mm ♦ Hydraulic oil: HL32, 18.0l ♦ Power supply: 5x2.5mm cable to the place of assembly ♦ Pneumatic supply: dry and lubricant air, min. 6 bar (max. 8 bar) ♦ Current protection: min. 32A with 3-phase 400V / 50Hz power supply.

Installation allowed only in closed areas ♦ prohibition of using reinforcement 20 cm from the top thicker than 4mm2 ♦ assembly for chemical anchors for an additional fee (submit in advance, preferably when setting the date of assembly) ♦ All connections, with particular reference to electrical connections, they must be made by authorized persons ♦ The installation must remain carried out by qualified personnel according to the rules attached in this building plan ♦ In the case of assembly by Nortec or its authorized service center, the lift must be on solid ground.