

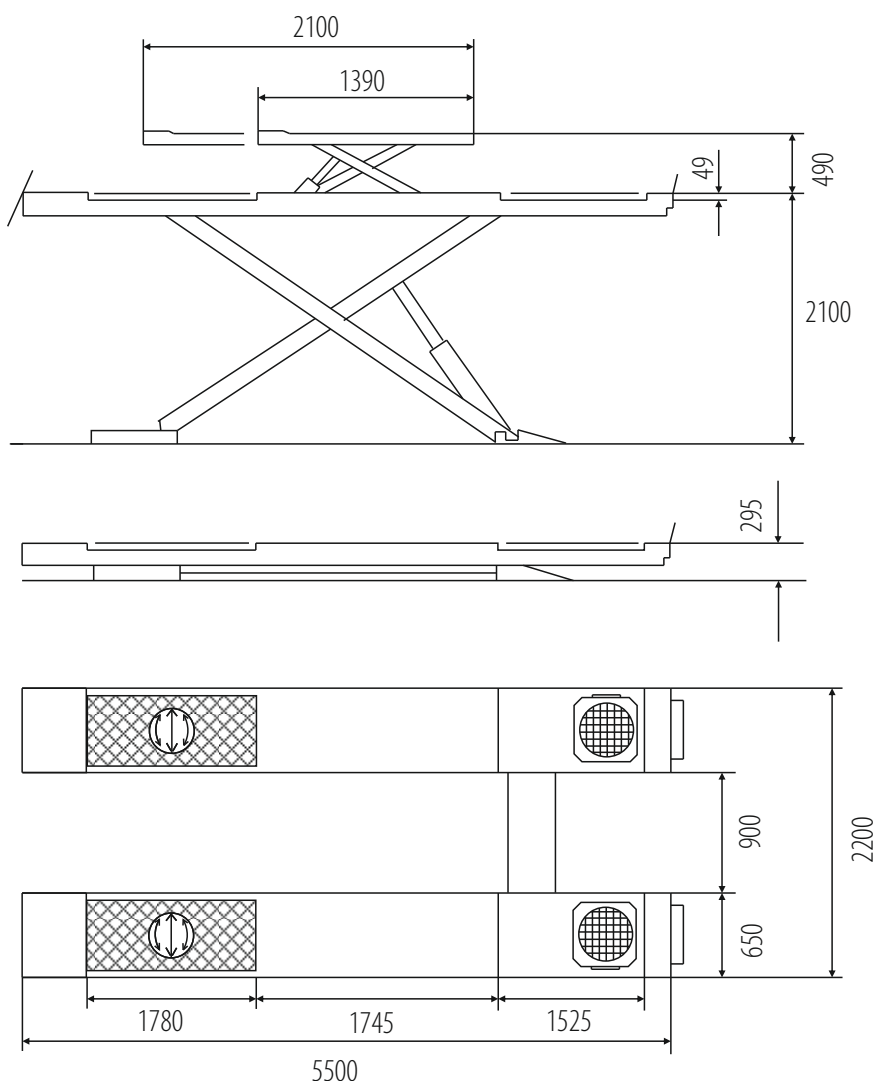
RAV650.2.55.ISI

MADE IN ITALY



CAPACITY:	5000 kg
POWER SUPPLY:	400V/50Hz
PNEUMATIC SUPPLY:	8 bar max.
MOTOR POWER:	2,6kW
LIFTING HEIGHT:	295-2100 mm (1805 mm)
PLATFORMS:	650 x 5500 mm
NOISE LEVEL:	<70 dB (A)
WEIGHT:	2025 kg
SIZE OF THE PACKAGE:	5800x730x850 mm

- Electrohydraulic diagnostic lift designed for installation in the moat
- Mechanical height lock pneumatically released
- Automatic hydraulic synchronization regardless of the load distribution
- Joints on maintenance-free self-lubricating sleeves
- The acoustic signal in the final phase of descent
- Adapted to the geometry with expansion plates
- Equipped with a subliminal lift with a lifting capacity of 4000 kg
- Control of the lift with safe voltage of 24V
- Safety devices compliant with EN1493: 2010.

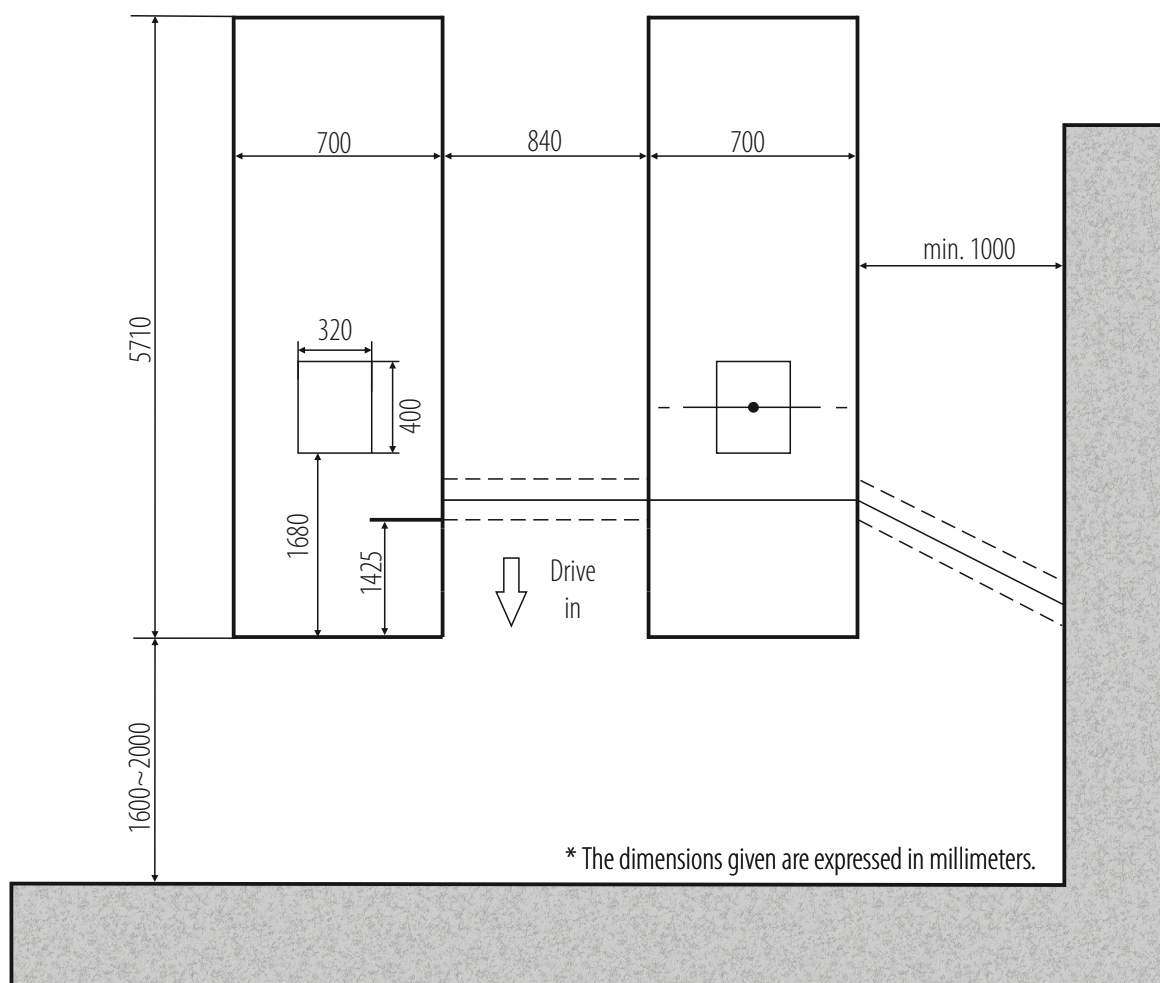
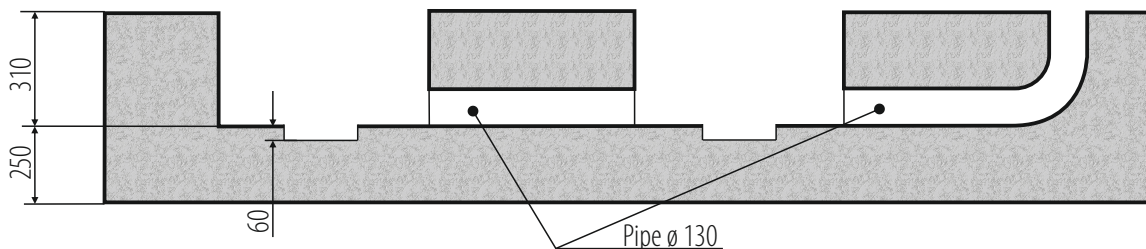


PNEUMATIC HEIGHT LOCK



EXPANSION PLATES AND SELECTIONS FOR TURNTABLES INCLUDED

RAV650.2.55.ISI



INSTALLATION REQUIREMENTS:



Concrete class: B25 or C20 / 25 with a minimum mounting area: 6210x2640x250mm ♦ Acceptable floor imbalance: +/- 5mm, floor execution: 3 weeks before assembly ♦ Mounting anchors: mechanical M12 / 150 mm 16 pieces or chemical M16 / 250mm ♦ Hydraulic oil: HL32, 16,0l ♦ Power supply: 5x2.5mm cable to the place of assembly ♦ Pneumatic supply: dry and lubricant air, min. 6 bar (max. 8 bar) ♦ Current protection: min. 32A with 3-phase 400V / 50Hz power supply.

Installation allowed only in closed areas ♦ prohibition of using reinforcement 20 cm from the top thicker than 4mm² ♦ assembly for chemical anchors for an additional fee (submit in advance, preferably when setting the date of assembly) ♦ All connections, with particular reference to electrical connections, they must be made by authorized persons ♦ The installation must remain carried out by qualified personnel according to the rules attached in this building plan ♦ In the case of assembly by Coframa or its authorized service center, the lift must be on solid ground.