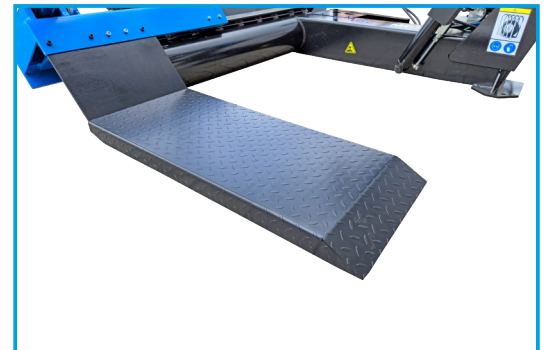


# MC703

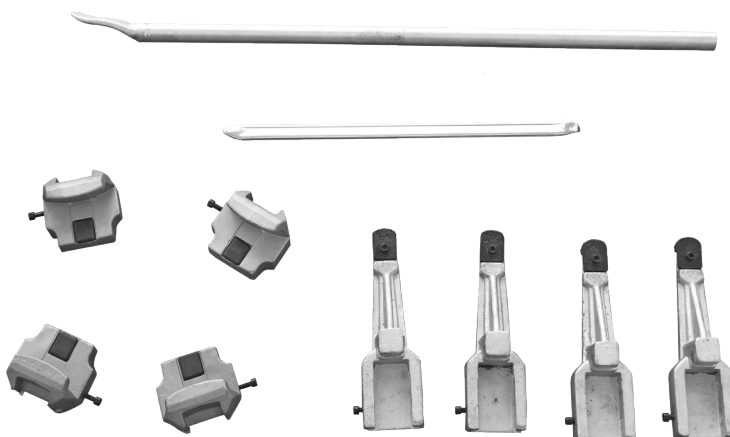


POWER SUPPLY:	400V/50Hz
PUMP MOTOR POWER:	2,2 kW
TRANSMISSION ENGINE POWER:	2,2 kW
RIM DIAMETER:	14" - 56"
RIM WIDTH:	1050 mm
MAX. WHEEL DIAMETER:	2300 mm
WEIGHT:	758 kg
NOISE LEVEL:	< 70 dBA

Designed for mounting and dismounting of tubeless and tubed tires ♦ For car wheels trucks, buses, agricultural and construction machinery ♦ Plate breaker and claw placed on rotary head for quick tool change ♦ Specially profiled impact plate allows for efficient disassembly of the tire without risk of damage ♦ Mobile platform for fast and precise wheel alignment ♦ Safe control voltage (24V) eliminates the risk of electric shock electric shock



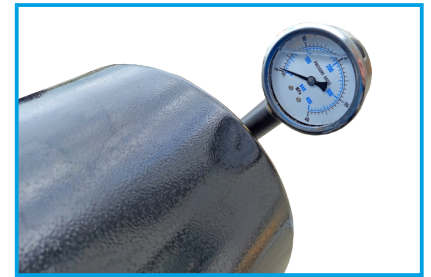
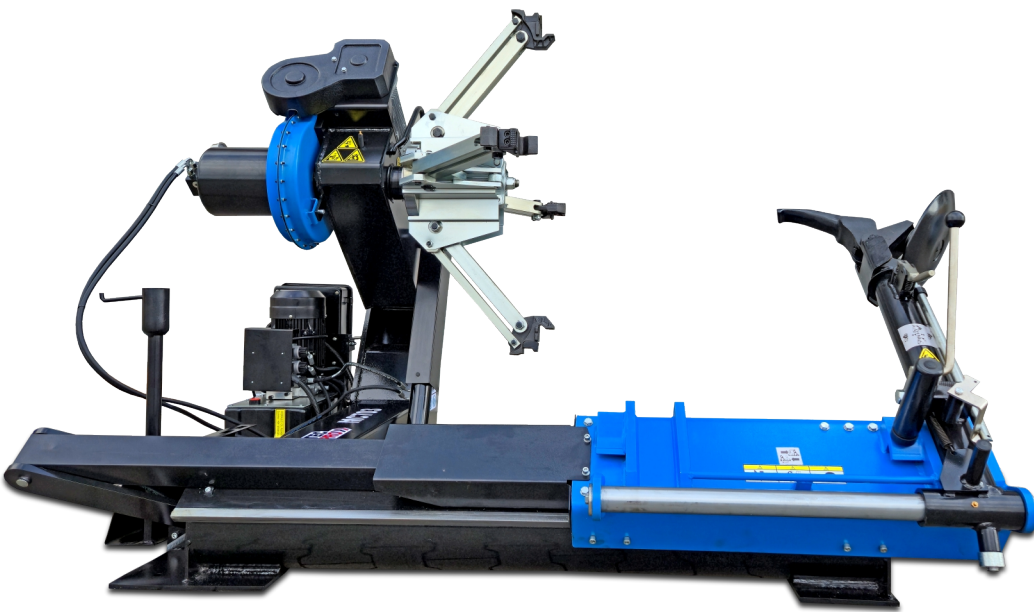
## STANDARD EQUIPMENT



## AUTOMATICALLY SLIDING PLATFORM



## POWERFUL 2.2 kW PUMP MOTOR



WORKING PRESSURE MANOMETER  
HYDRAULIC SYSTEM



BRAKE AND CLAW ON A ROTATING HEAD

ADAPTERS FOR ALUMINUM RIMS AS STANDARD



56" RIM ADAPTERS AS STANDARD

