

WB420

POWER SUPPLY:	230V/50Hz
POWER CONSUMPTION:	250 W
MAX. WHEEL WEIGHT	70 kg
RIM DIAMETER:	10" - 24"
RIM WIDTH:	1,5" - 20"
SHAFT DIAMETER:	40 mm
ACCURACY:	1 g
BALANCING TIME:	8 s
NOISE LEVEL:	< 70 dB (A)
WORKING TEMPERATURE:	5-50 °C
WEIGHT:	80 kg



STANDARD EQUIPMENT



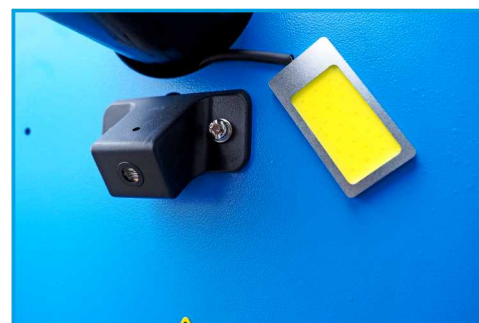
Balancing machine designed for balancing passenger car wheels and light truck ♦ automatic wheel distance measurement from balancing machine and rim diameter using a retractable measuring cup ♦ automatic wheel width measurement using sonar ♦ automatic wheel positioning ♦ active protective hood, automatic wheel braking, programs: static, dynamic and ALU ♦ electric brake ♦ footbrake ♦ quick optimization function, unbalance sharing and hiding weights behind the shoulders of the rim ♦ the ability to change units: inch / millimeter and gram / gram, auto-diagnosis and calibration program.



CONVENIENT TOOL BOX



INTUITIVE CONTROL PANEL



LASER POINTER /
INNER WHEEL LIGHTING



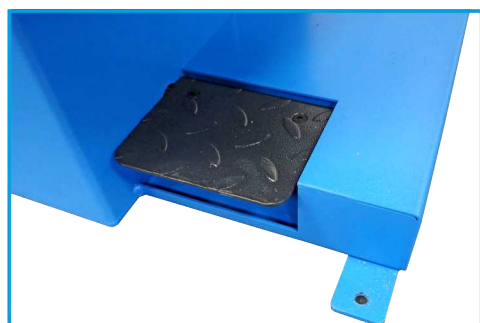
SONAR FOR MEASURING RIM WIDTH



AUTOMATIC POSITIONING
WHEELS IN THE POINT OF IMBALANCE



LINEAR LASER POINTER



FOOTBRAKE



NUTRUNNER IN A BALANCER WITH A CLUTCH



WEIGHT HIDING FUNCTION
BEHIND WHEELS ARMS!