

SPECIFICATION

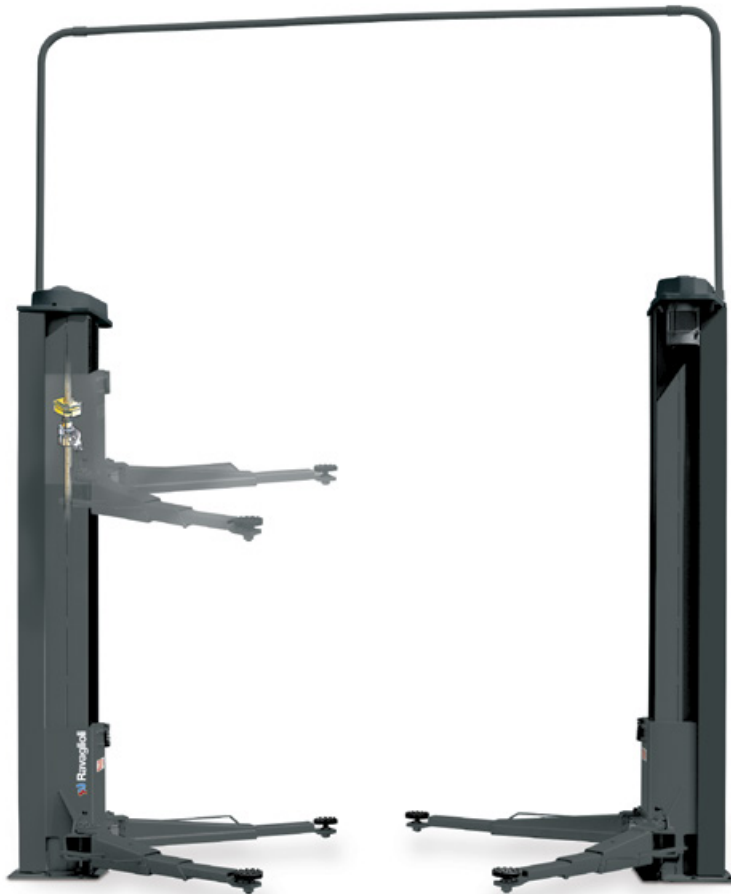
Mercedes-Benz



Electro-mechanical 2 post lift
Capacity 3,7 T

KPN345WEK MB

Dokumentennummer: 009357 PB RAV KPNWEKBN-3.7t



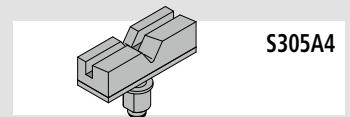
S224A3



S224A4



S370A19



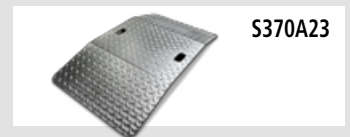
S305A4



S370A27



S370A22



S370A23

Art. No.	Q.ty	Description
		KPN345WEK MB Electro-mechanical 2-post lift, capacity 3,7 T <i>Supplied with the lift:</i>
S224A3	Set of 4	Quick drop-in spacers H= 80 mm
S224A4	Set of 4	Quick drop-in spacers H= 140 mm
S370A19	Set of 4	Set of supports for chassis lifting
		<i>Accessories on request:</i>
S305A4	Set of 4	V-shaped supports (adjustable H=150/190mm)
S370A27	Set of 2	Bowls
S370A22	1	Belts kit
S370A23	Set of 4	Set of ramps for extra low vehicles

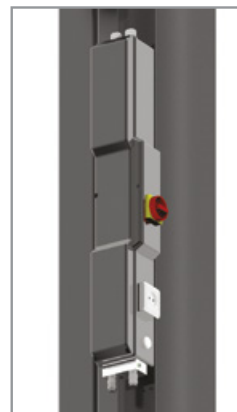
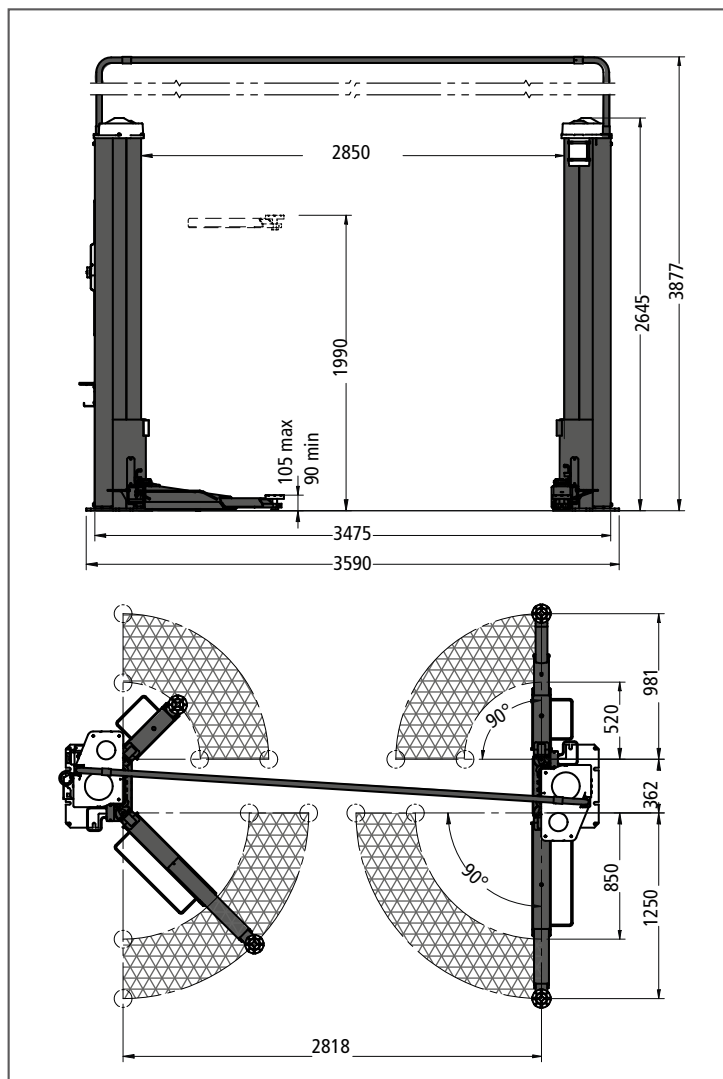
SPECIFICATION

Mercedes-Benz



Electro-mechanical 2 post lift
Capacity 3,7 T

KPN345WEK MB



ENERGY KIT

- 2 compressed air quick connections
- 1 electric plug Schuko 220V single phase



Ravaglioli S.p.A.

via 1° maggio 3 - Fraz. Pontecchio M. - 40037 Sasso Marconi (Bo) - Italia

Tel. +39 - 051-6781511 - Fax +39 - 051-846349 - rav@ravaglioli.com - www.ravaglioli.com

A DOVER COMPANY